



USER MANUAL

ECONOMY

Wind Speed Sensor



Warranty

Please note the loss of warranty and non-liability by unauthorized manipulation of the system. You need a written permission of the LAMBRECHT meteo GmbH for changes of system components. These activities must be operated by a qualified technician.

The warranty does not cover:

1. Mechanical damages caused by external impacts (e. g. icefall, rockfall, vandalism).
2. Impacts or damages caused by over-voltages or electromagnetic fields which are beyond the standards and specifications in the technical data.
3. Damages caused by improper handling, e. g. by wrong tools, incorrect installation, incorrect electrical installation (false polarity) etc.
4. Damages which are caused by using the device beyond the specified operation conditions.

Maintenance

Maintenance of the sensor is not necessary.

Troubleshooting

If the sensor does not provide a signal, the following issues should be checked:

1. Does the cup rotor spin? If the sensor has no heating, is the cup rotor frozen? If the sensor has a heating system, check the power supply at pins M and G.
2. Is the sensor supply voltage present at pin J and H? If not, check the voltage source or the cable.

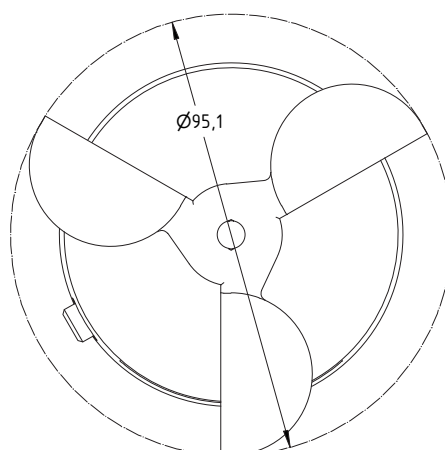
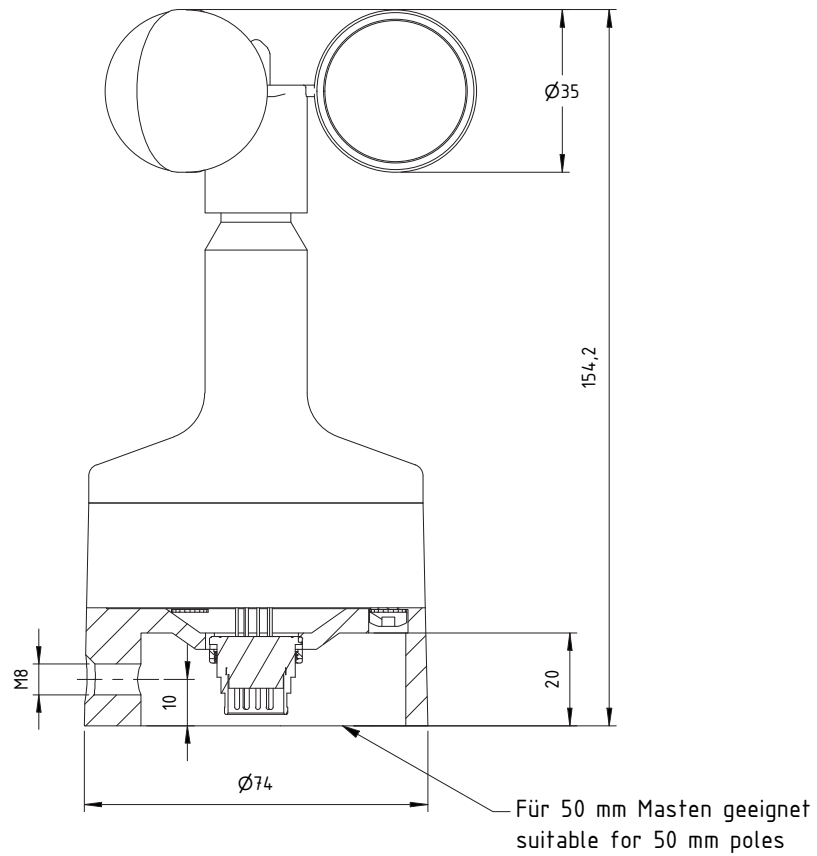
If there is no output signal at the sensor, even though points 1 and 2 of the troubleshooting were okay, the sensor must be returned to the manufacturer for repair.

Electrical connection

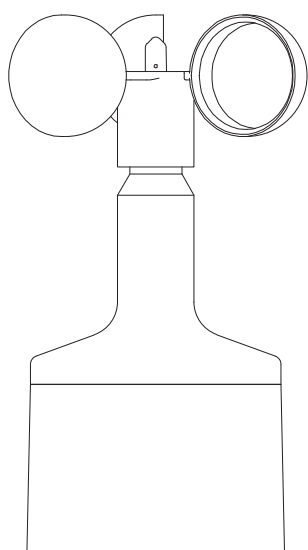
The electrical connection is made using a 12-pin plug connector. A shielded cable 10 x AWG 24 C UL sw with a wire cross-section of 0.22 mm² is recommended for connection. The maximum cable length is approx. 100 m. Preconfigured cables with cable socket can be ordered separately.



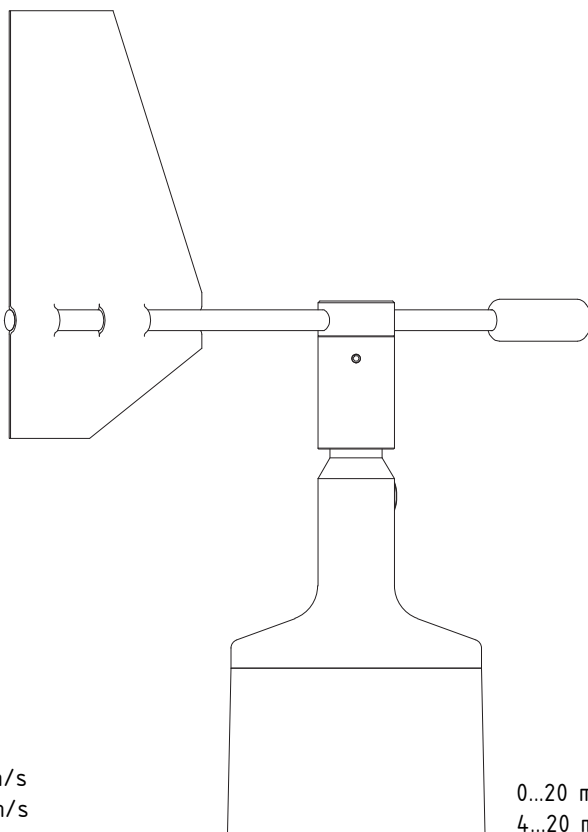
Dimensioned drawing



Wiring diagram

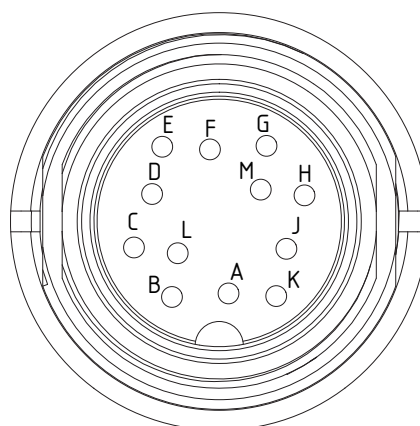


0...20 mA = 0...50 m/s
4...20 mA = 0...50 m/s



0...20 mA = 0...360°
4...20 mA = 0...360°

Anschlussbild / connection diagram		
PIN	Kabelfarbe color code	Funktion function
F	BK	+ 0...20 mA
E	BN	GND (I OUT)
D	RD	+ 4...20 mA
C	NC	NC
L	OG	Fout 700 Hz (WG)
B	YE	GND (A GND)
A	GN	SDI-12 OUT
K	NC	NC
J	BU	+ 10...30 VDC (Elektronik)
H	VT	GND
M	GY	- 24 VDC Heating
G	WH	+ 24 VDC Heating



Technical data

ECONOMY Wind Speed Sensor	
Id No.	00.14575.400000
Measuring range	0.7...50m/s
Accuracy	2 % FS
Resolution	0.1 m/s
Starting value	0.7 m/s
Output	0...20 mA = 0...50 m/s (maximum load 500 Ohm at 15 V) 4...20 mA = 0...50 m/s (maximum load 500 Ohm at 15 V)
Range of application	temperatures: -30...+70 °C heated; 0...+70 °C unheated survival wind speed: 75 m/s
Operating voltage	10...30 VDC
Heating voltage	24 VDC, 600 mA (for controlled heating)
Housing	seawater resistant aluminum; anodized; IP 53
Measuring element	three-armed cup rotor, break-proof
Dimensions	see dimensional drawing; for mounting on pipe Ø 49...51 mm
Weight	0.4 kg
ACCESSORIES (please order separately)	
Id No. 32.14565.060000	Ready-made cable with 12-pin plug; length: 12 m
Id No. 32.14565.060020	Ready-made cable with 12-pin plug; length: 15 m

Disposal

LAMBRECHT meteo GmbH is listed and registered at the Stiftung Elektro-Altgeräte Register ear under:

WEEE-Reg.-Nr. DE 45445814

In the category of monitoring and control instruments, device type: "Monitoring and control instruments for exclusively commercial use".

Within the EU



The device has to be disposed according to the European Directives 2002/96/EC and 2003/108/EC (Waste Electrical and Electronic Equipment). Do not dispose the old device in the household waste!
For an environmentally friendly recycling and disposal of your old device, contact a certified disposal company for electronic waste.

Outside the EU

Please follow the regulations in your country regarding the appropriate disposal of waste electronic equipment.

Copyright © 2022 LAMBRECHT meteo GmbH. All rights reserved.
Information in this document subject to change without notice.

14575-24V_b-de.indd 01.23
Photo copyright: © Galyna Andrushko - Adobe stock

LAMBRECHT meteo GmbH
Friedländer Weg 65-67
37085 Göttingen
Germany

Tel +49-(0)551-4958-0
Fax +49-(0)551-4958-312
E-Mail info@lambrecht.net
Internet www.lambrecht.net



Quality System certified by DQS according to
DIN EN ISO 9001:2015 Reg. No. 003748 QM15