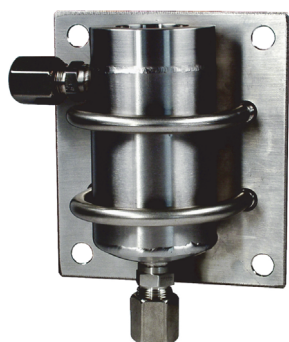
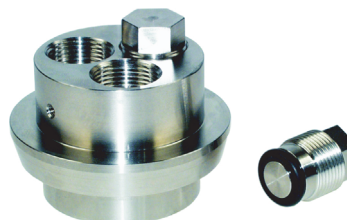


Flow-Tank DFG



Accessories



Lid with 3 x PG13.5 process connections and blind gland VS

Characteristics

For continuous analysis measurement with pH-, ORP-cells in liquid media with installation length of max. 120 mm.

Technical data

Material : stainless steel 1.4571
 Process pressure : max. 16 bar
 Operating temperature : max. 140 °C
 Process connection : PG 13.5, G ¼ B or G1A
 Inlet-, outlet : clamping sleeve for pipes 10x2 mm
 Tank diameter : 54 mm

Ordering code

DFG - 1. - 2. - 3.

1. Model

50 measuring tank D=54 mm

2. Process connection

1 x PG13.5 *X = 45 mm

3 x PG13.5 *X = 45 mm

3 x G ¼ B *X = 45 mm

1 x G 1 A *X = 27 mm

3. Options

00 without option

Accessories (stainless steel 1.4571)

MP50 mounting plate incl. Mounting parts

RSB50 2 clamp bails incl. Bolt nuts

VS PG13,5 blind glands PG13.5

Dimensions

